



Type SPD104 & SPD104/B - Dry Running Seal For High Speed

PRODUCT DESCRIPTION

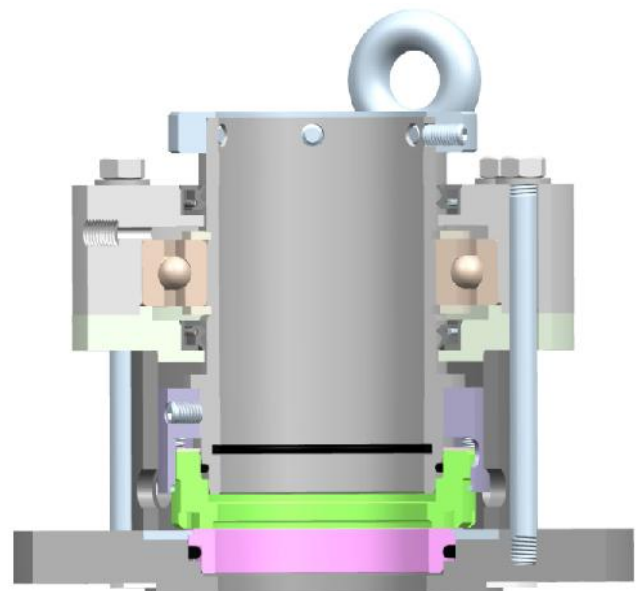
Seal Type SPD104 and SPD104/B Mechanical Seals are designed for Top, Bottom and Side Entry Drives in Agitators, Mixers OR Blenders in case when Non-Aggressive and Non-Hazardous Media are sealed with the use of Cooling Liquid Preventing against Dry Running. Construction of MOC designed of these Seals purpose of holding whole Rotary Parts together with the help of Snap Rings which make easy for Installation and Removal.

DESIGN FEATURES

Balance Pusher Seals used for Sealing Environment. Dry Run Seals are excellent in High Speed Seals for Operation in Vacuum Conditions as well as Undemanding Mixers applications. In SPD104/J & SPD104/B/J Cool Set designed Mating Ring help to dissipate the Heat from Faces. This Type Seal design may use either without Bearing OR with Integral Bearing. These Seals are a Multiple Spring basically externally Mounted Seal with 'O' Ring as Secondary Sealing member. Various Elastomers can be offered for various media application

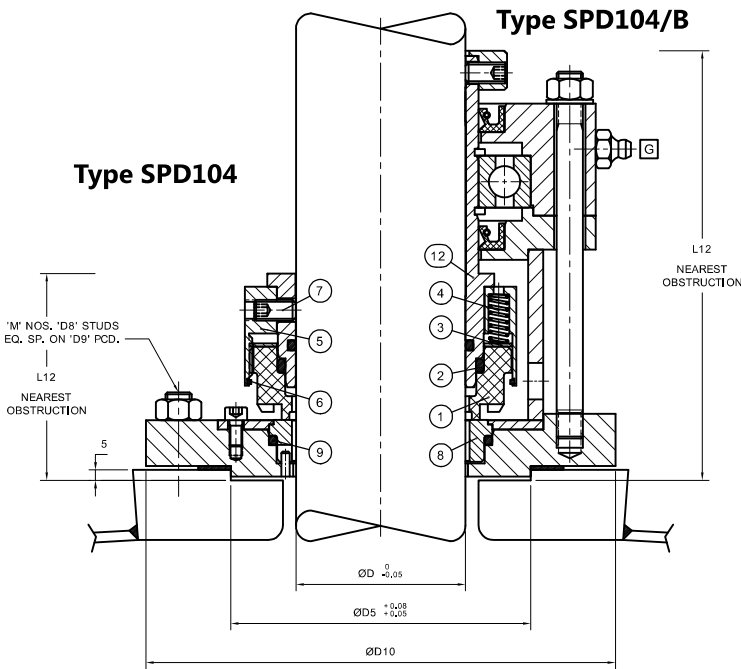
MATERIALS

Seal Ring Faces	: Spl. Carbon
Seat Faces	: SiC
Elastomer	: Viton, TTV, FEP and FFKM
MOC	: SS 316 – CHANGE OF MOC ON REQUEST



OPERATING CAPABILITIES

Shaft Dia.	: 25mm to 150mm
Pressure	: Full Vacuum to 8 bar
Temperature:	-30°C to 140°C
Speed	: 900 r.p.m.



Part No.	Description
1	Seal Ring
2	O-Ring
3	Thrust Ring
4	Spring
5	Spring Holder
6	Snap Ring
7	Set Screw
8	Seat
9	O-Ring / Packing
12	Sleeve

SHAFT D mm	D5	M,D8	D9	D10	L12 SPD104	L12 SPD104B
25.00	55.00	4, M10	100.00	120.00	110.00	180.00
30.00	60.00	4, M10	110.00	130.00	110.00	180.00
35.00	65.00	4, M10	125.00	145.00	110.00	180.00
40.00	70.00	4, M10	130.00	150.00	110.00	190.00
45.00	75.00	6, M10	135.00	155.00	110.00	190.00
50.00	80.00	6, M10	140.00	160.00	110.00	190.00
55.00	100.00	6, M10	145.00	165.00	110.00	200.00
60.00	110.00	6, M10	160.00	180.00	110.00	200.00
65.00	115.00	6, M12	165.00	190.00	110.00	200.00
70.00	120.00	6, M12	170.00	195.00	110.00	210.00
75.00	120.00	6, M12	175.00	200.00	110.00	210.00
80.00	125.00	6, M12	180.00	205.00	110.00	210.00
85.00	125.00	8, M12	185.00	210.00	110.00	210.00
90.00	130.00	8, M12	190.00	215.00	110.00	225.00
95.00	130.00	8, M12	195.00	220.00	110.00	225.00
100.00	140.00	8, M12	200.00	225.00	110.00	225.00
105.00	140.00	8, M16	210.00	240.00	125.00	240.00
110.00	160.00	8, M16	220.00	250.00	125.00	240.00
115.00	170.00	8, M16	230.00	260.00	125.00	240.00
120.00	180.00	8, M16	240.00	270.00	125.00	240.00
125.00	190.00	8, M16	250.00	280.00	125.00	250.00
130.00	200.00	8, M16	260.00	290.00	125.00	250.00
140.00	210.00	8, M16	280.00	320.00	125.00	250.00
150.00	220.00	8, M16	300.00	330.00	125.00	250.00

Due to continuous improvement specifications and dimensions may change without prior notice.

